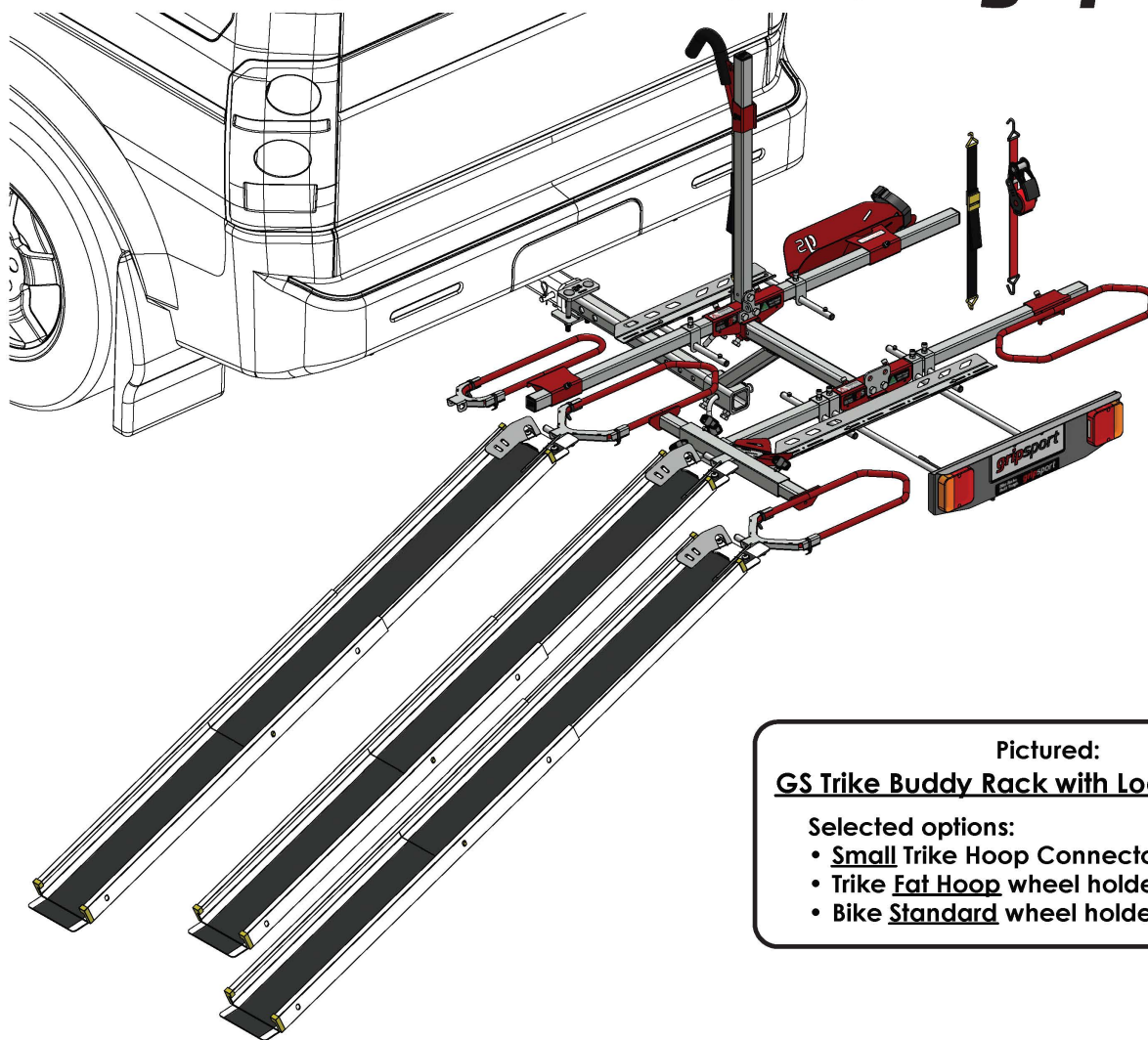


GS-Trike+ Buddy Rack w/ Loading Ramps

gripsport®



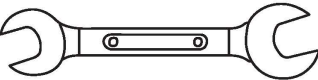
Pictured:
GS Trike Buddy Rack with Loading Ramps

Selected options:



- **Small Trike Hoop Connector Frame**
- **Trike Fat Hoop wheel holders**
- **Bike Standard wheel holders**

Tools required:


8,10,13,16,17,18,19,24 mm



3,4,6 mm

50kg
1x Trike



30kg
1x Bike

Rated:
1x 50kg Trike, 1x 30 kg Bike
Medium Off-Road use



facebook.com/gripsport.real



@gripsportbikeracks



bit.ly/GripSportVideos




Hand tools assembly only.
Do not use power tools.



Read and refer to this manual to ensure correct assembly and installation.



Danger of accident and injury if these instructions are not followed. If unsure, contact gripsport or get a qualified installer to assist.



website info at:
www.gripsport.com.au

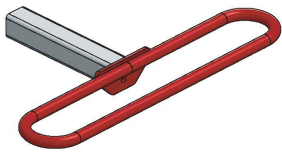
GS Trike Buddy Rack - Parts List

gripsport

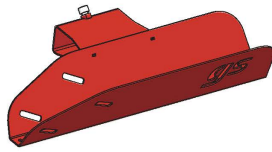
GS Trike Buddy - options

Ramps and Ramp Hardware listed under separate instructions.

Trike Standard Wheel Holding option



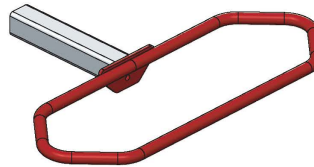
2 x Trike Standard Hoops



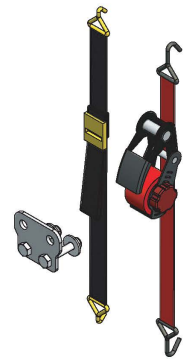
1 x Trike Taco Wheel Channel

or

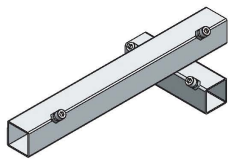
Trike Fat Wheel Holding option



3 x Trike Fat Hoops

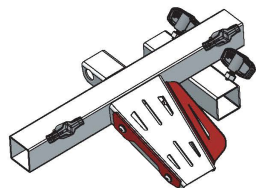


1 x Anchor Kit with 2x Strap options



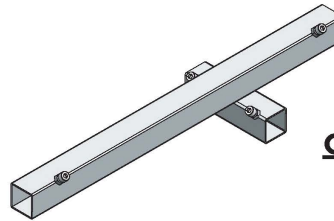
1 x Hoop Connector Small Frame
No Ramp attachment

or



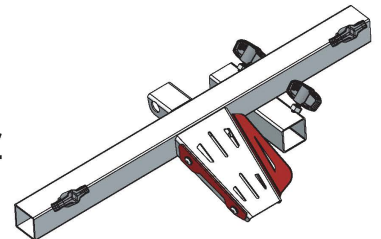
1 x Hoop Connector Small Frame
with Ramp attachment

or

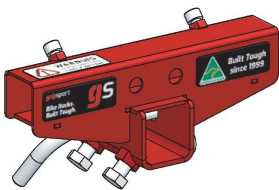


1 x Hoop Connector Large Frame
No Ramp attachment

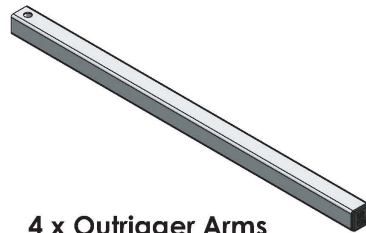
or



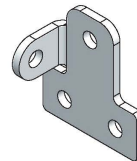
1 x Hoop Connector Large Frame
with Ramp attachment



2 x Carrier Mounts



4 x Outrigger Arms



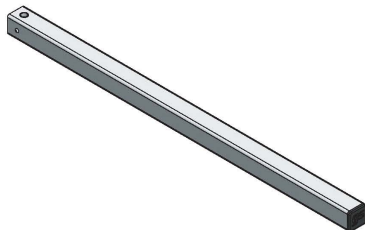
2 x Tab Plates



1 x Cinch Strap



1 x Quick Release Carrier Strap

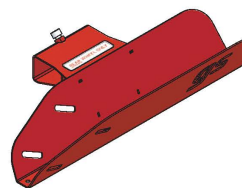


1 x Hooks Post

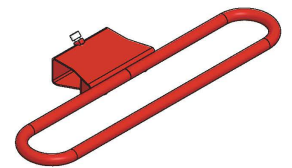


1 x Short Hook

Standard wheel holding option:



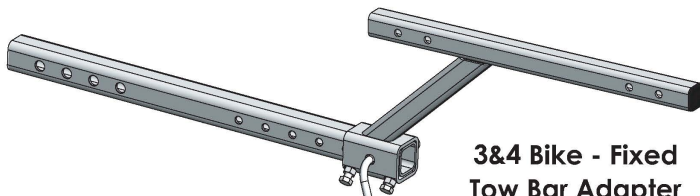
1 x Taco Rear Wheel Channel



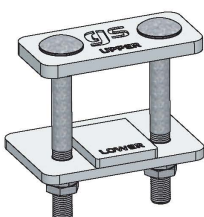
1 x Standard Wheel Hoop

Also available:

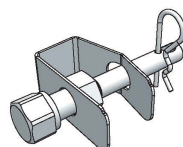
- All Hoop option (2x Std Hoops)
- Fat Hoop option (2x Fat Hoops)



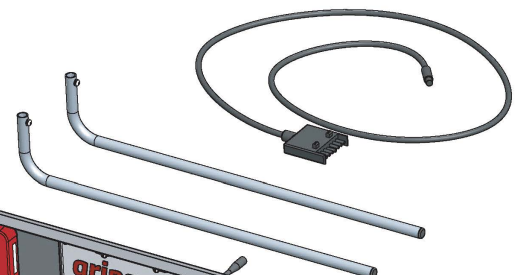
3&4 Bike - Fixed Tow Bar Adapter



Hitch Clamp



Hitch Stabiliser



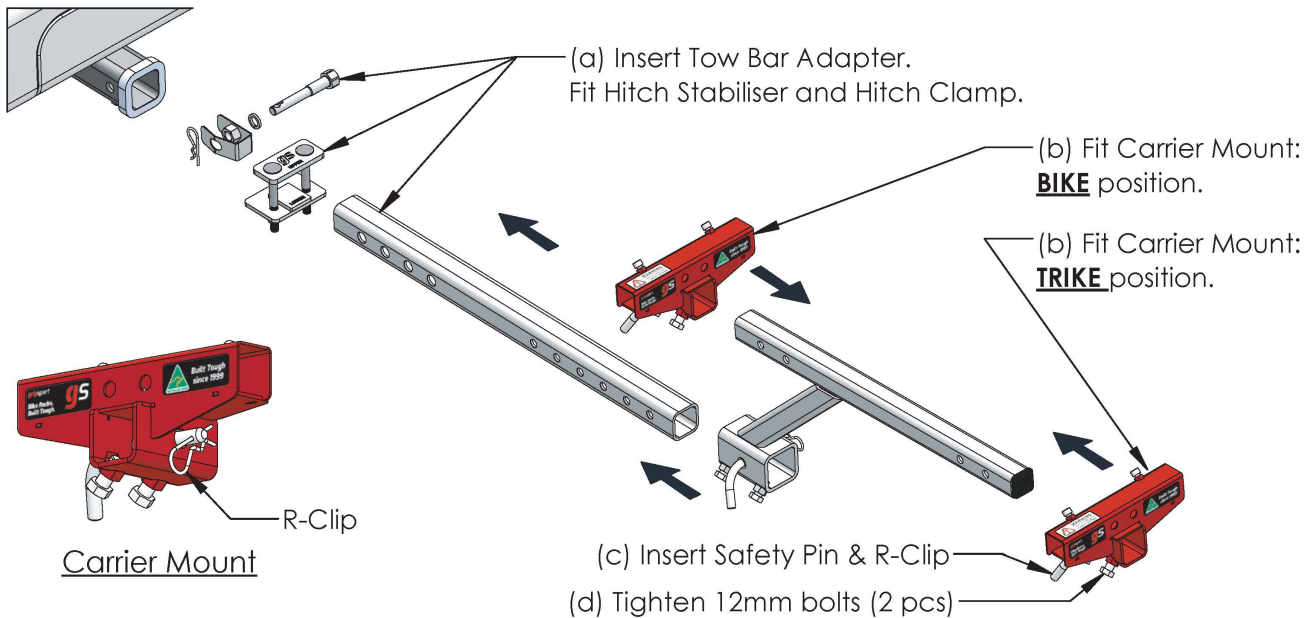
1 x Rack Light
incl detachable cable with 7-pin Flat plug connector

GS Trike Buddy Rack - Assembly Instructions

gripsport

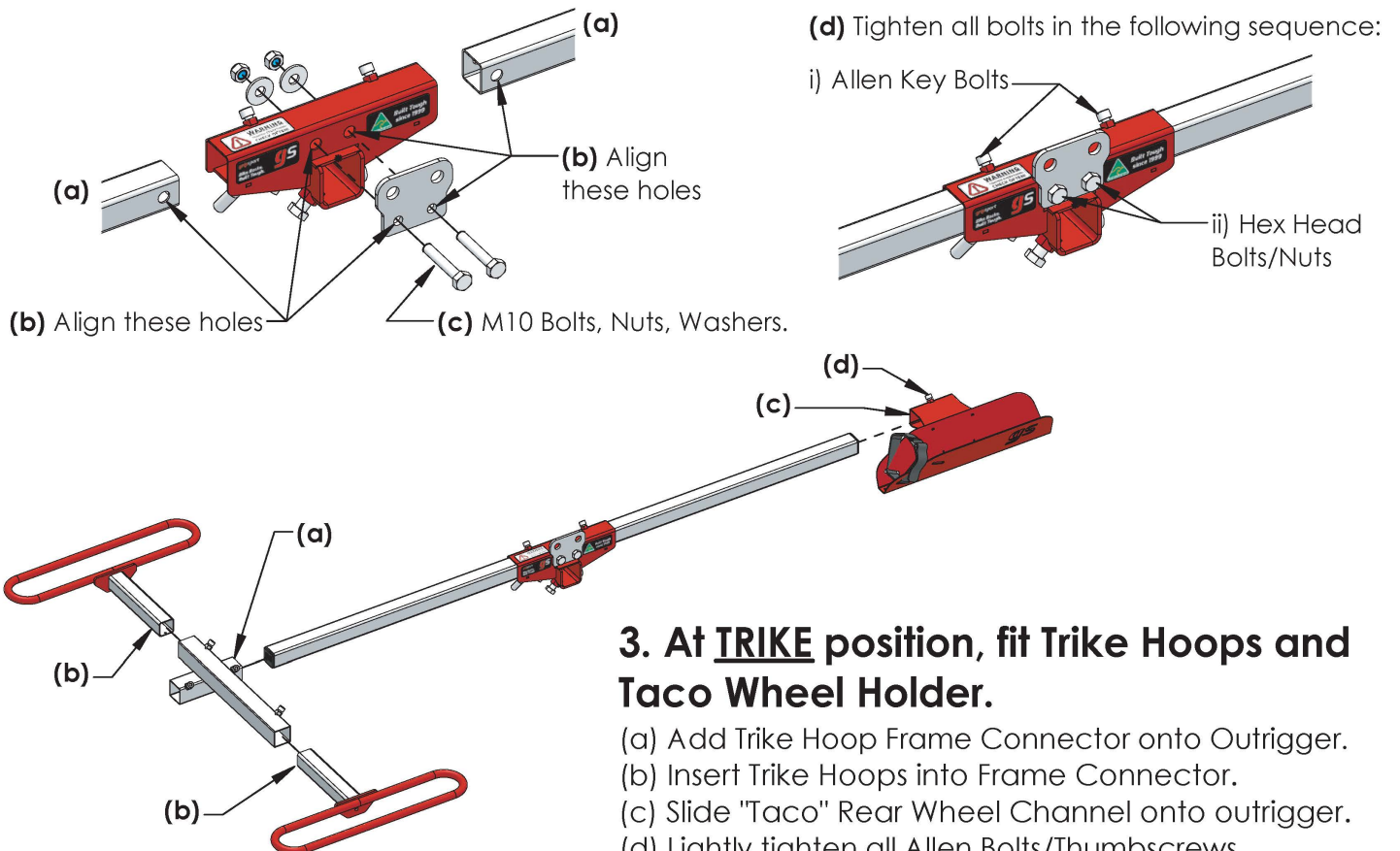
1. Install Tow Bar Adapter & Carrier Mount

- Insert Tow Bar Adapter into vehicle hitch to desired position and secure accordingly. Install supplied Hitch Stabiliser and Hitch Clamp, as per supplied instructions.
- Fit 2x Carrier Mounts to outside hole positions (can be repositioned later).
- Insert Safety Pin and R-Clip, 2 per Carrier Mount.
- Tighten 12mm bolts, 2 per Carrier Mount.



2. At **TRIKE** position, fit Outrigger Arms to Carrier Mount.

- Insert Outrigger Arm into Carrier Mount & align holes.
- Add Anchor Plate and align holes.
- Fit M10 bolts through all parts, loosely fitting washers & nuts as shown.
- Tighten all bolts in the sequence shown.



3. At **TRIKE** position, fit Trike Hoops and Taco Wheel Holder.

- Add Trike Hoop Frame Connector onto Outrigger.
- Insert Trike Hoops into Frame Connector.
- Slide "Taco" Rear Wheel Channel onto outrigger.
- Lightly tighten all Allen Bolts/Thumbscrews.

4. Optional: Fit Wheel Hoop Reducers

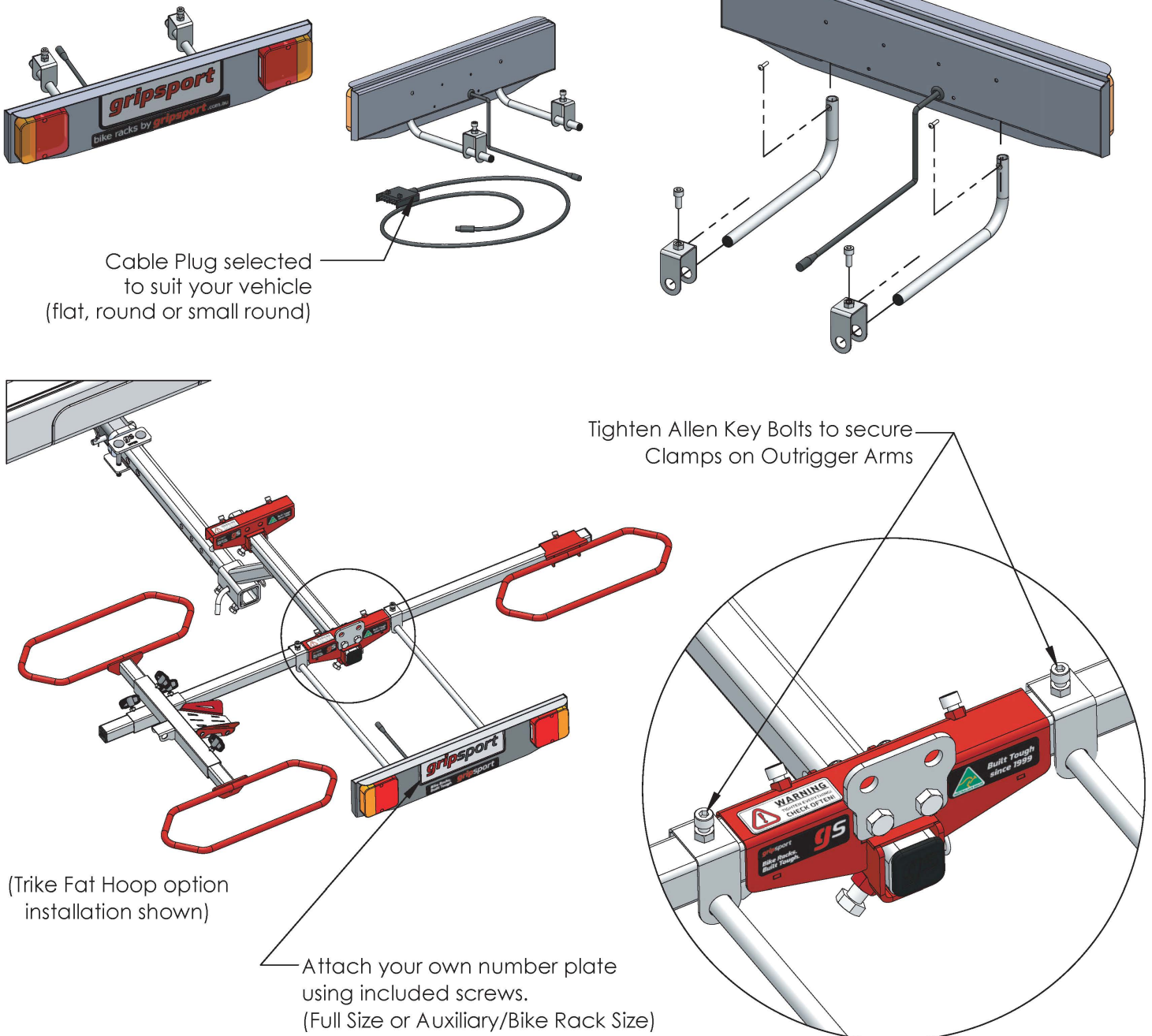
gripsport

If using Wheel Hoop Reducers, position as shown below and fix with Cable Ties:



5. Fit Rack Light to TRIKE Carrier Mount

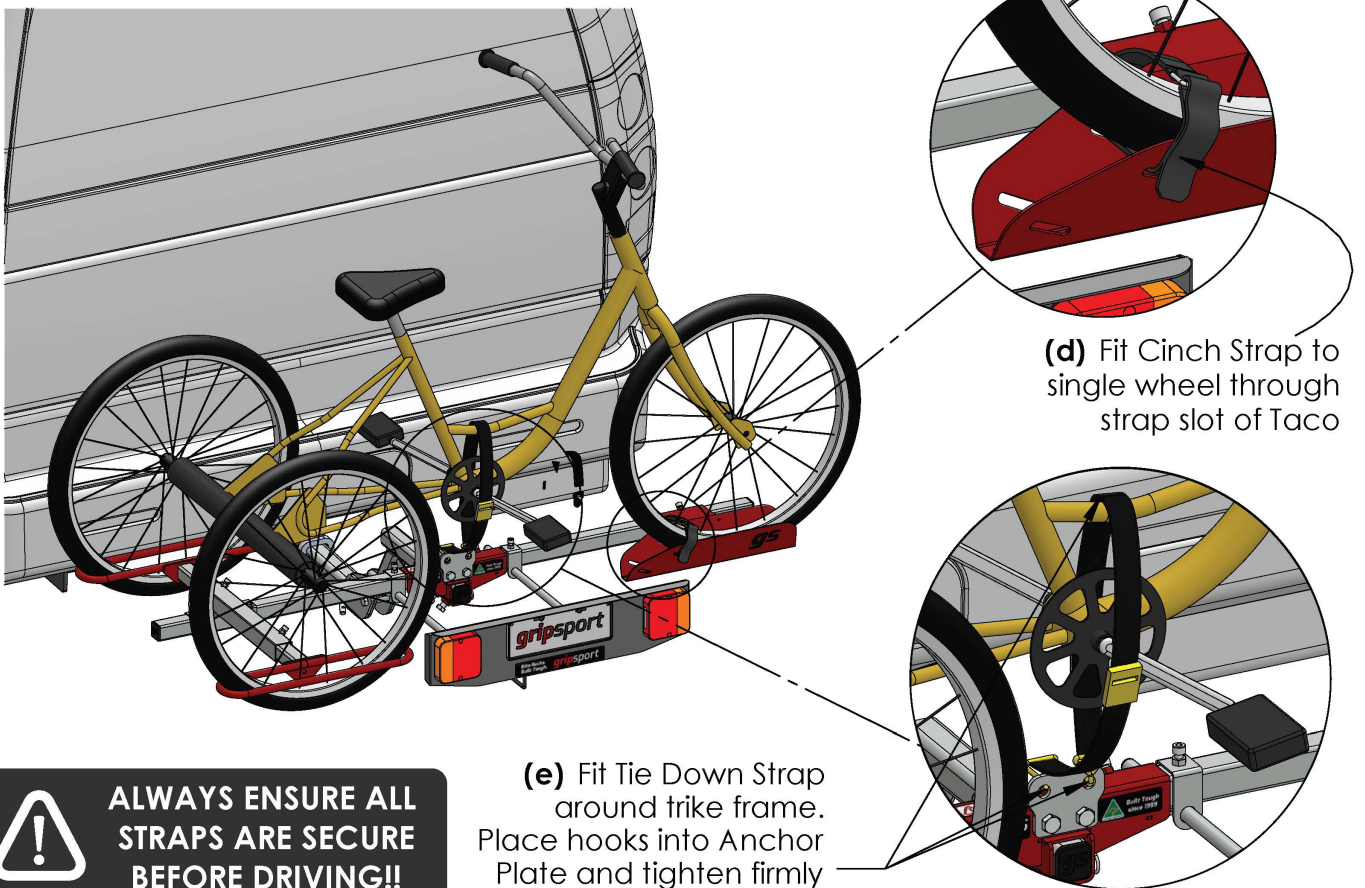
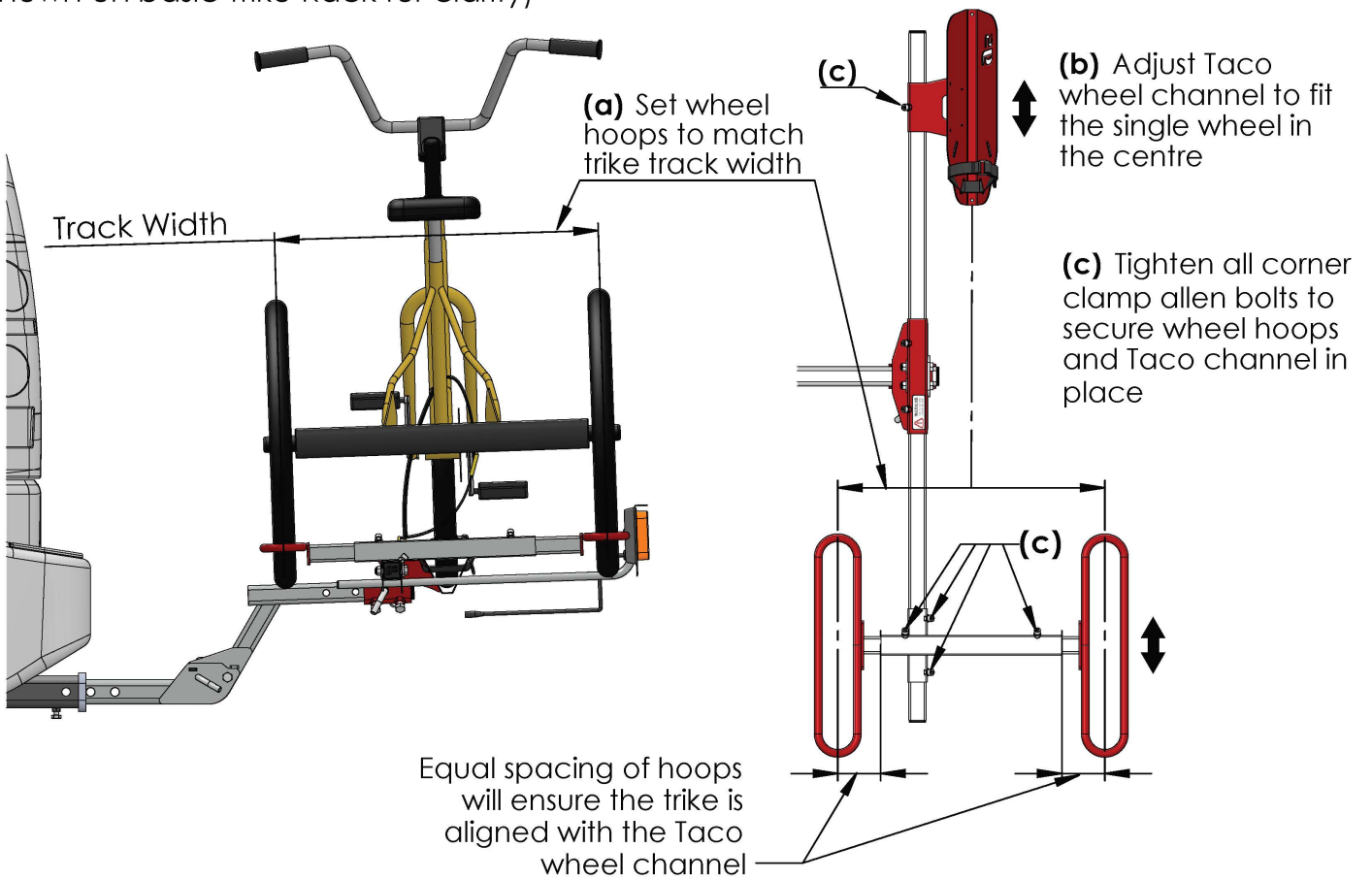
Assemble and fit Rack Light as shown below:



6. Loading Your Trike

gripsport

To load your trike, follow these steps:
(shown on basic Trike Rack for clarity)



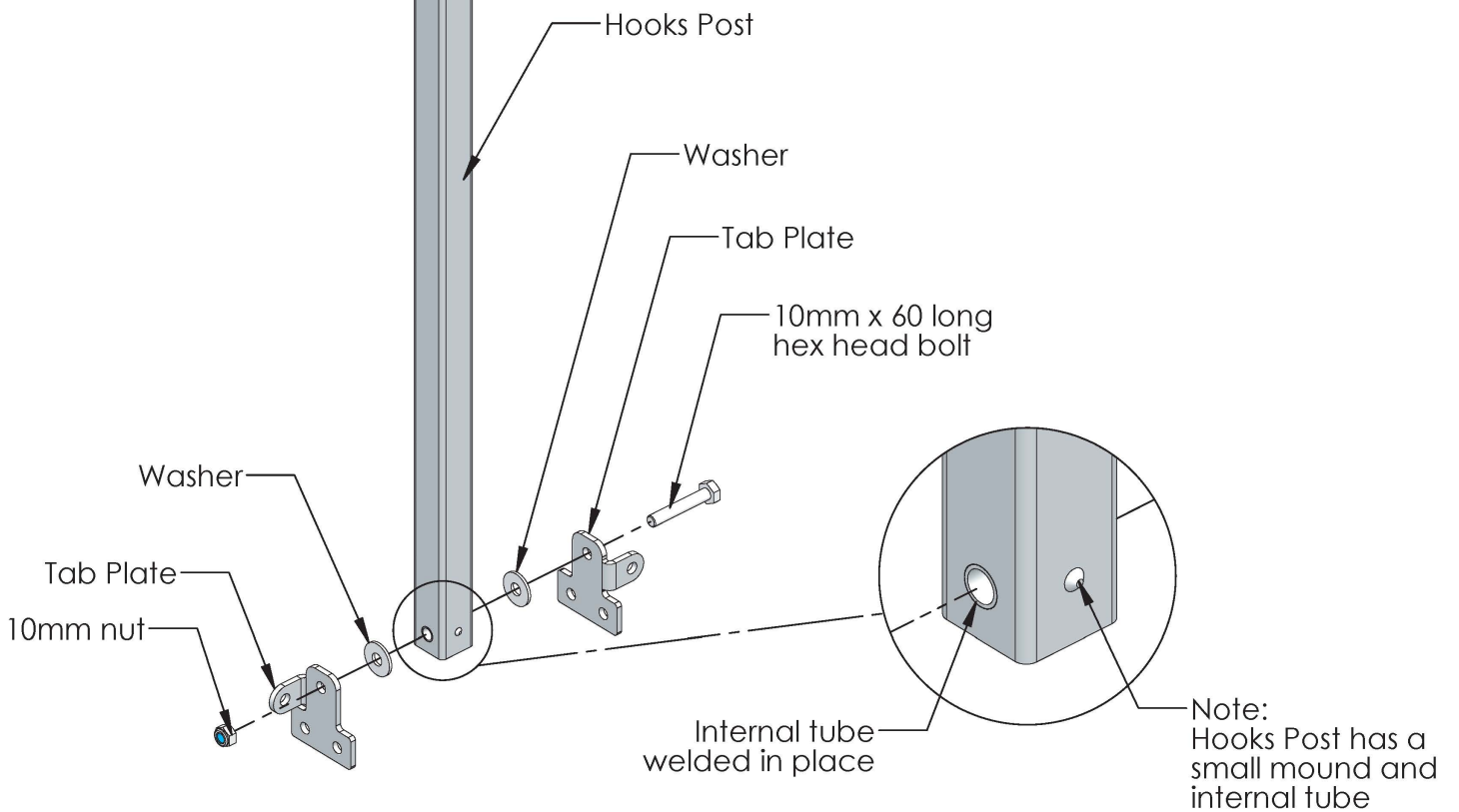
ALWAYS ENSURE ALL STRAPS ARE SECURE BEFORE DRIVING!!

(Alternative: Retractable Strap supplied for cases requiring longer strap)

7. **BIKE** Carrier - Sub-Assemble Hooks Post

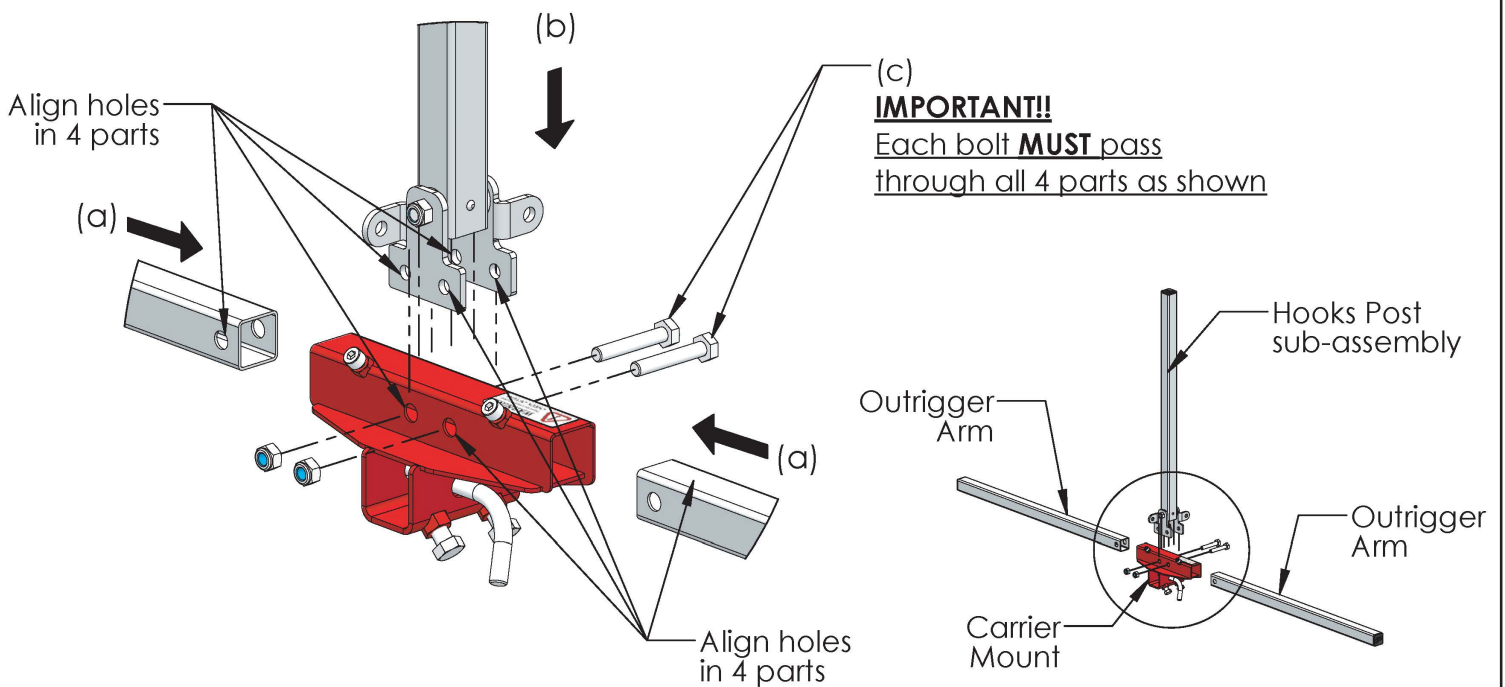
gripsport

Loosely assemble
Hooks Post with
Tab Plates as below:



8. **Fit Hooks Post & Outrigger Arms to BIKE position Carrier Mount**

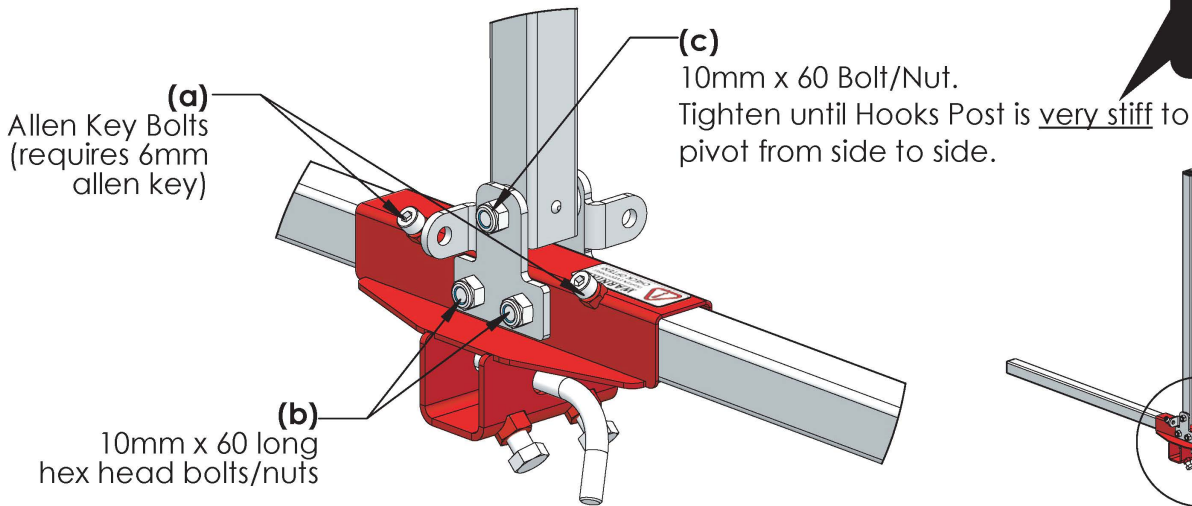
- (a) Insert Left and Right Outrigger Arms into Carrier Mount (align holes)
- (b) Place Hooks Post assembly over Carrier Mount (align holes)
- (c) Insert 10mm x 60 long Hex Head Bolts through all parts & loosely fit 10mm Nyloc Nuts



9. Tighten fixings on BIKE position Carrier Mount

gripsport

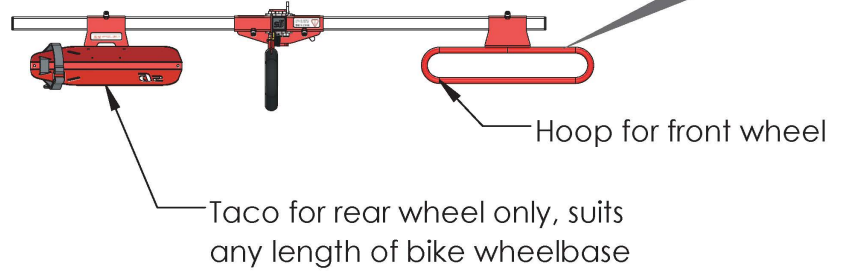
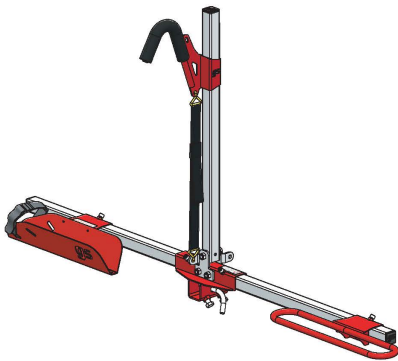
Tighten all bolts in this sequence:



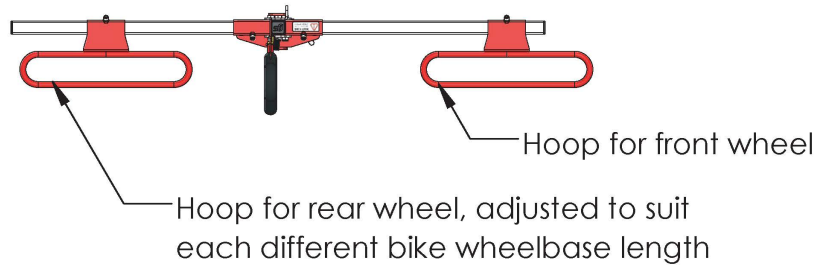
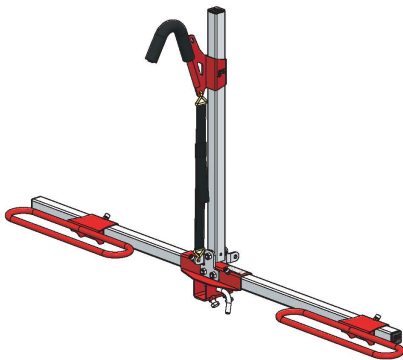
10. Fit BIKE Wheel Holders to Outrigger Arms

Tip!
Wheels in Hoops do not require Cinch/velcro Strap.

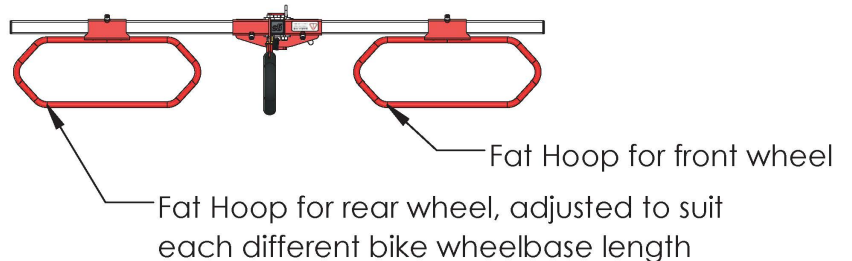
(a) Hoop & Taco set-up (standard)



(b) All Hoop set-up option



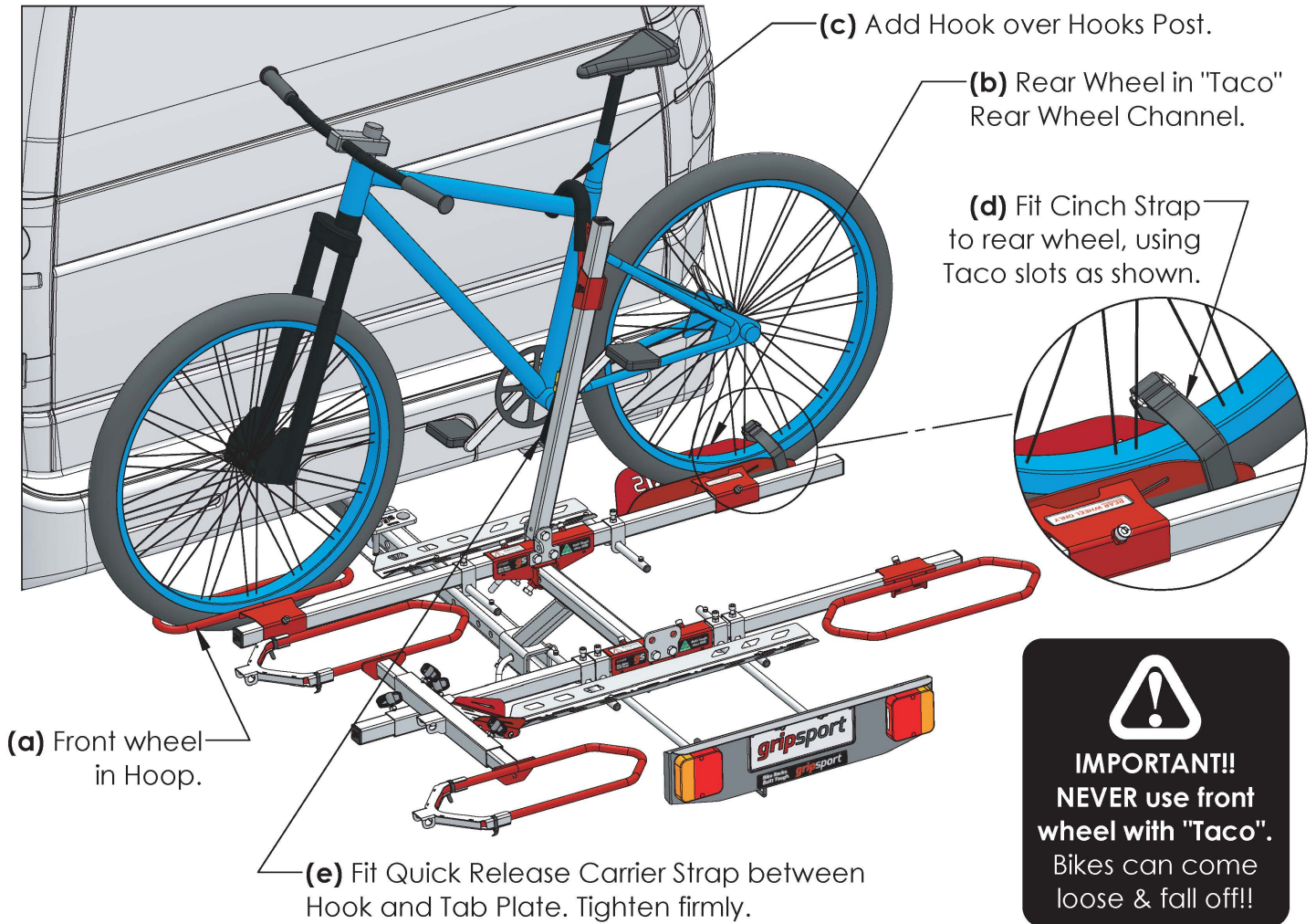
(c) Fat Bike set-up option



11. Loading Your Bike

gripsport

Lift first bike into position as shown and complete these steps:



12. Hooks & Post for secure carrying

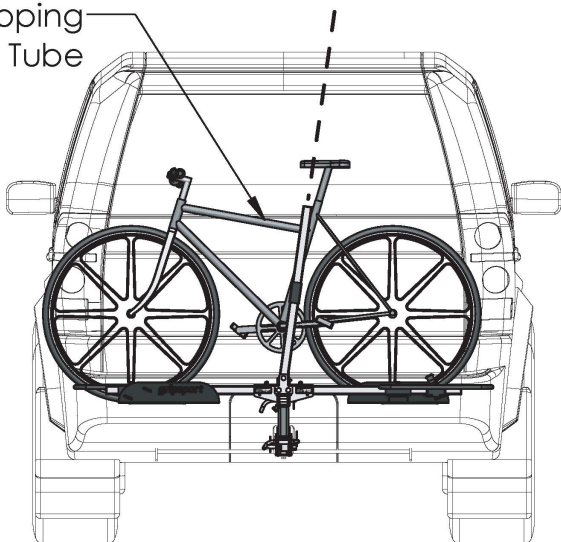


IMPORTANT!!

User **MUST** adjust Hook and Hooks Post to suit their bikes as shown below to ensure secure carrying. Failure to do so can result in bikes coming loose off rack!

If carrying a bike with a sloped top tube,
pivot the Hooks Post so the Hooks sits at the lowest point on the sloped top tube.

Sloping
Top Tube



If carrying a bike with a flat top tube,
keep the Hooks Post in a vertical position.

Flat Top
Tube

