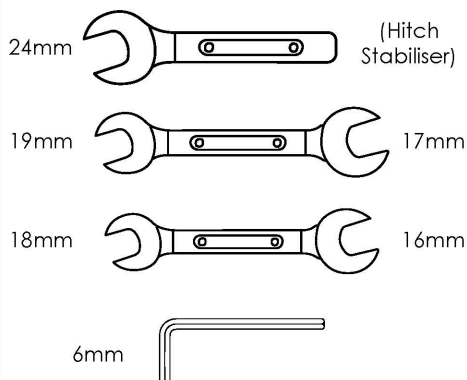


Pictured:
GS-Adventure 2 Bike Tilting
(Standard Length
Tow Bar Adapter)

Tools required:



Rated: 30kg per bike spot
Square Hitch Mount: Off-Road use
Tongue Mount: Light Off-Road only

Warranty:
5 year limited lifetime.
See all details online at:
www.gripsport.com.au/terms-conditions



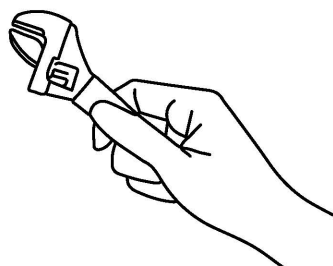
facebook.com/gripsport.real



[@gripsportbikeracks](https://www.instagram.com/gripsportbikeracks)



bit.ly/GripSportVideos



Hand tools assembly only.
Do not use power tools.



Read and refer to this
manual to ensure correct
assembly and installation.



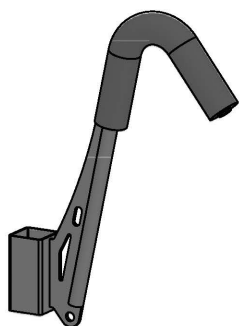
**Danger of accident and
injury if these instructions
are not followed. If unsure,
contact gripsport or get a
qualified installer to assist.**



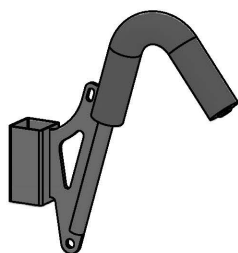
website info at:
www.gripsport.com.au

2 Bike GS-Adventure quantities shown below.

1, 3 and 4 bike rack quantities vary accordingly.



1 x Long Hook



1 x Short Hook



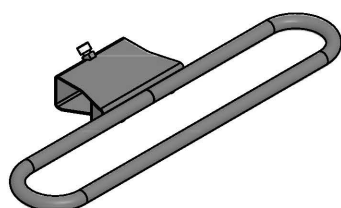
10mm x 60 long Hex Head Bolts (qty 3)



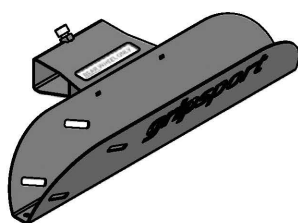
10mm Nyloc Nuts (qty 3)



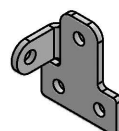
10mm Large Washers (qty 2)



2 x Wheel Hoops



2 x "Taco"
Rear Wheel Channels



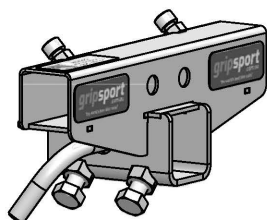
2 x Tab Plates



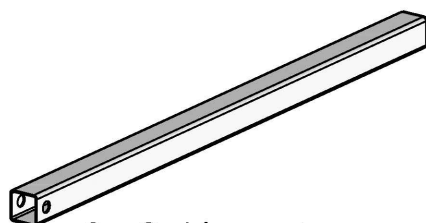
2 x Cinch Straps



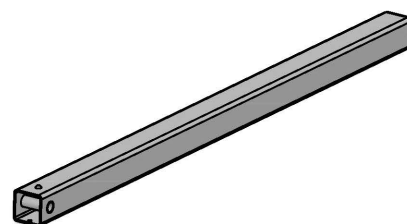
2 x Quick Release
Carrier Straps



1 x Carrier Mount

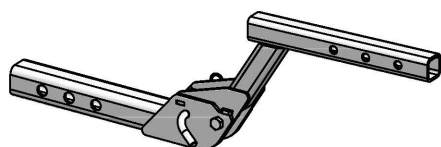


2 x Outrigger Arms

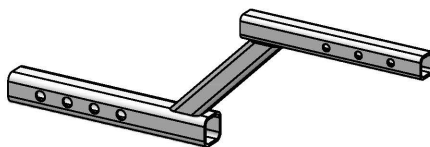


1 x Hooks Post

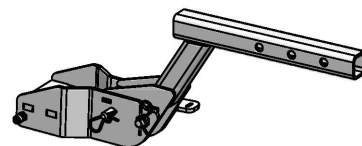
1 selected Tow Bar Adapter (TBA):



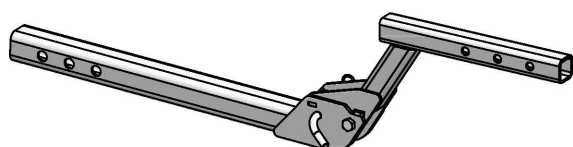
1&2 Bike - Tilting
Tow Bar Adapter



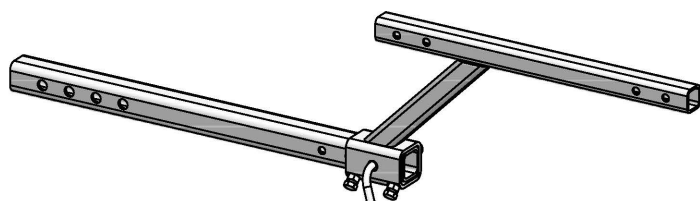
1&2 Bike - Fixed
Tow Bar Adapter



2 Bike Tongue - Tilting
Tow Bar Adapter



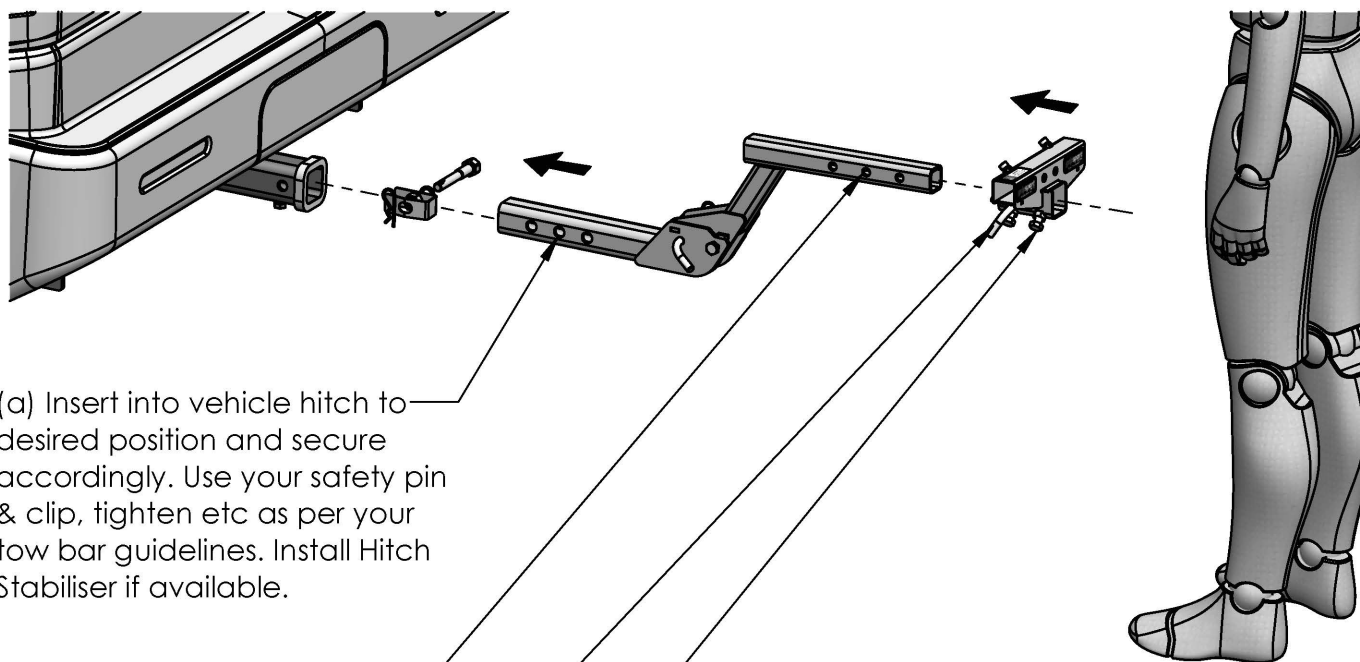
1&2 Bike - Tilting, Extended Length
Tow Bar Adapter



3&4 Bike - Fixed
Tow Bar Adapter

1. Install Tow Bar Adapter & Carrier Mount

gripsport

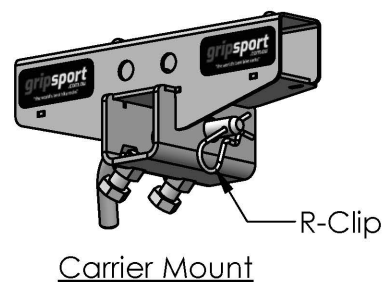


(a) Insert into vehicle hitch to desired position and secure accordingly. Use your safety pin & clip, tighten etc as per your tow bar guidelines. Install Hitch Stabiliser if available.

(d) Tighten 12mm bolts (2 pcs)

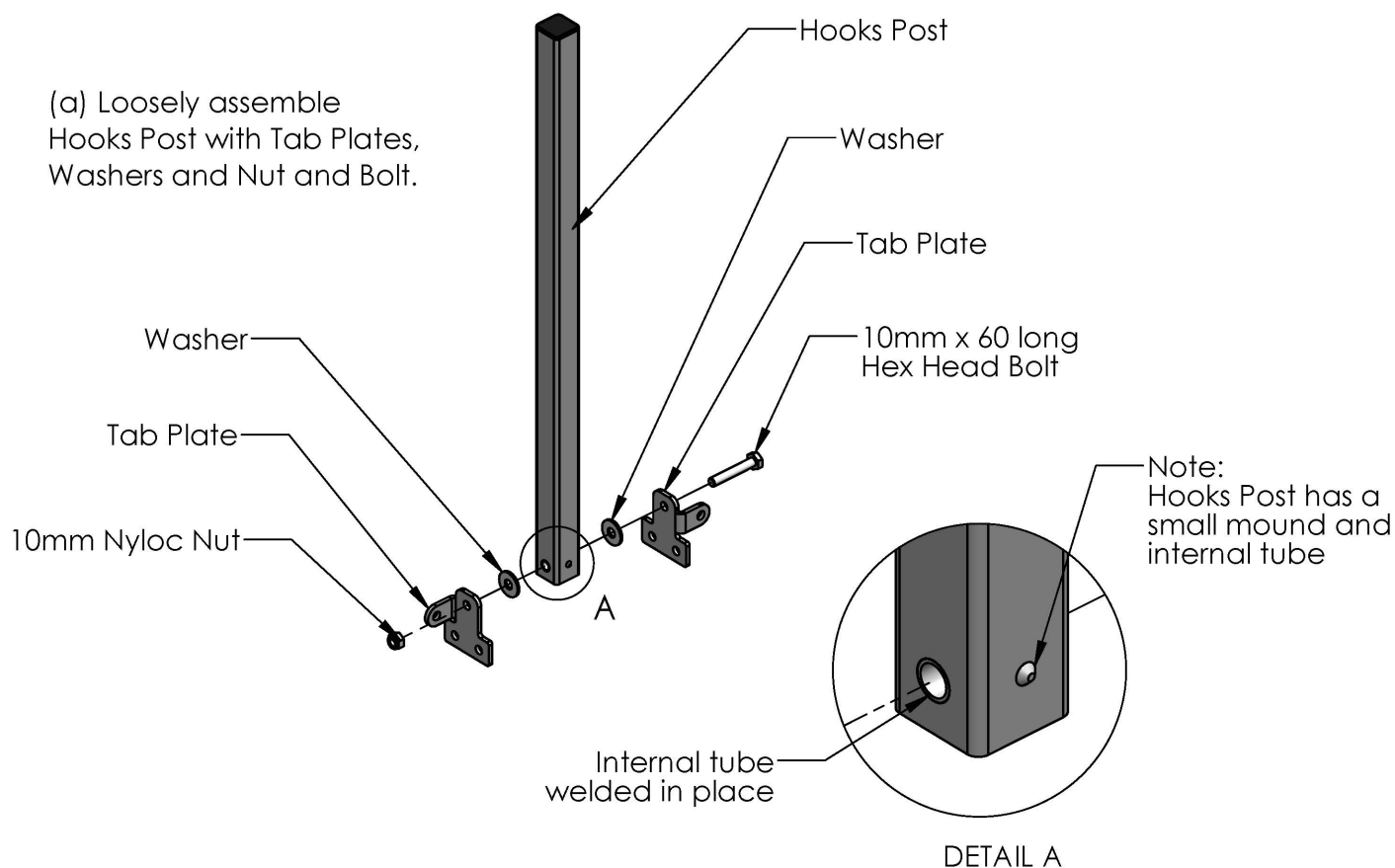
(c) Insert Safety Pin & R-Clip

(b) Set Carrier Mount to desired hole



2. Assemble Hooks Post

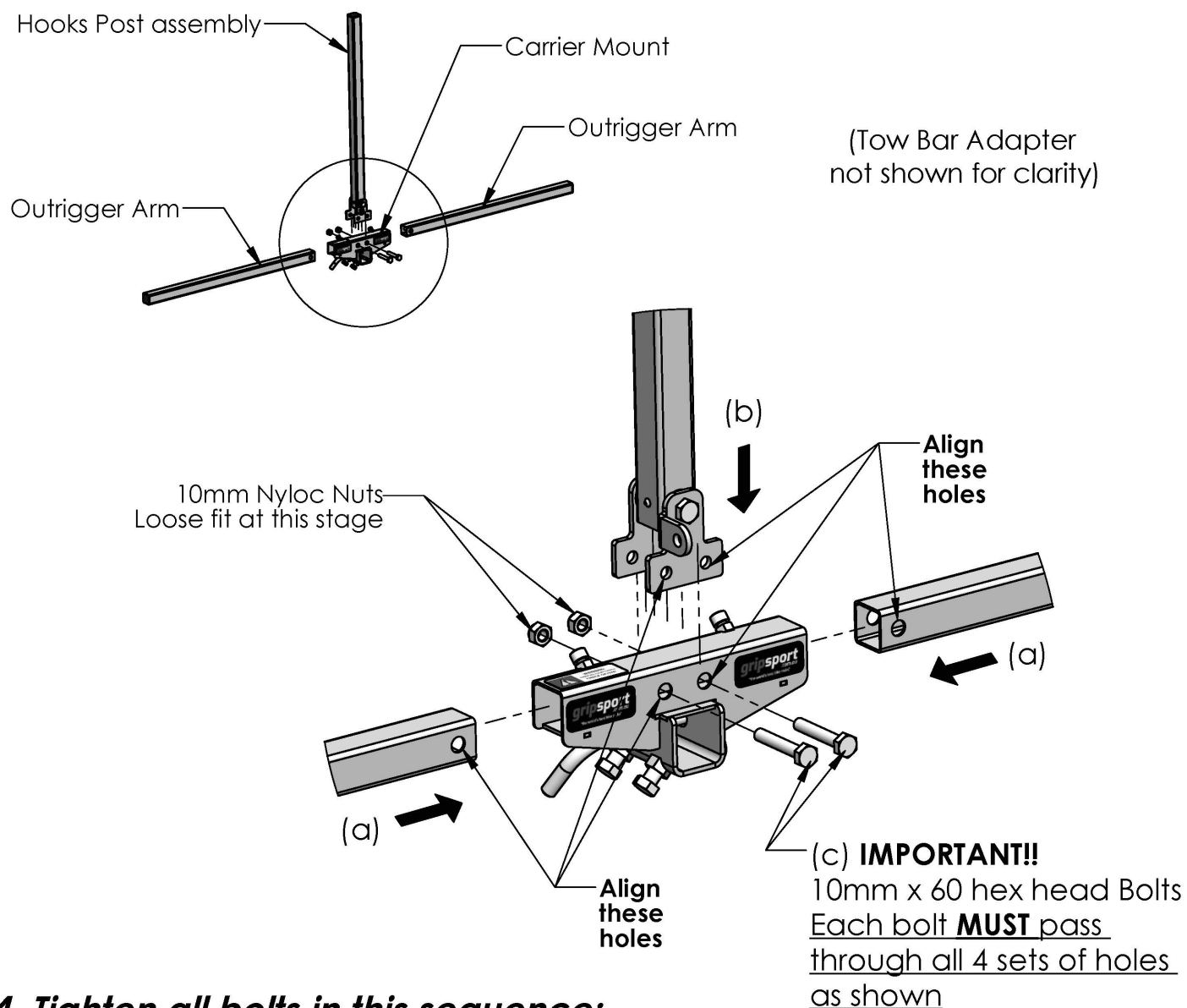
(a) Loosely assemble Hooks Post with Tab Plates, Washers and Nut and Bolt.



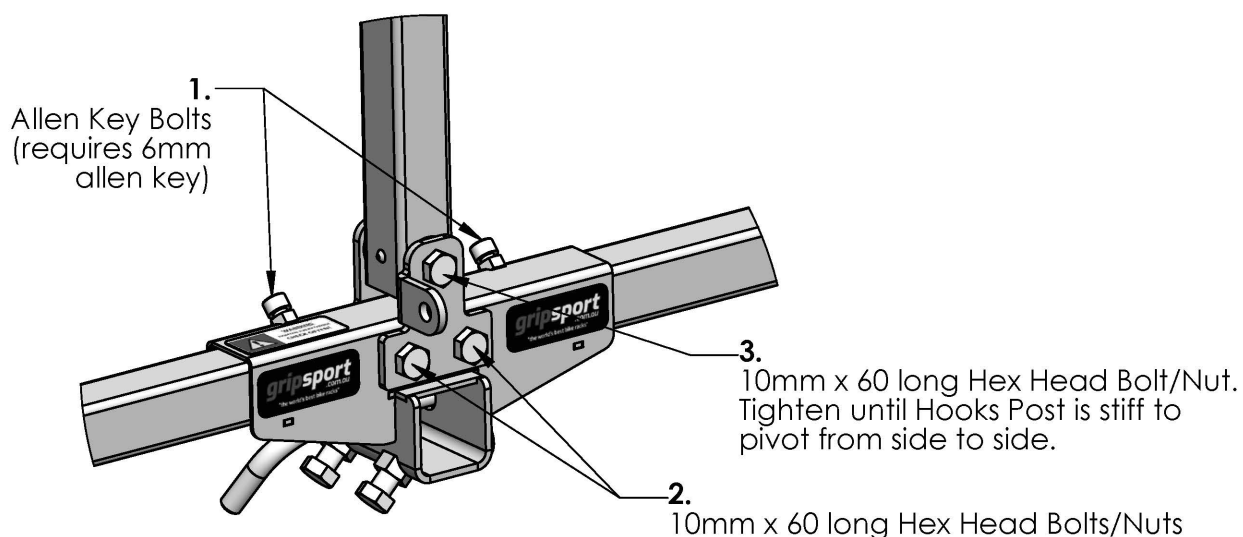
3. Add Outrigger Arms and Hooks Post

gripsport

- (a) Insert Outrigger Arm into Carrier Mount & align holes
- (b) Place Hooks Post assembly over Carrier Mount & align holes
- (c) Insert 10mm x 60 long hex head bolts through all parts & loosely fit nuts



4. Tighten all bolts in this sequence:



5. Fit "Taco" Rear Wheel Channels & Hoops

gripsport

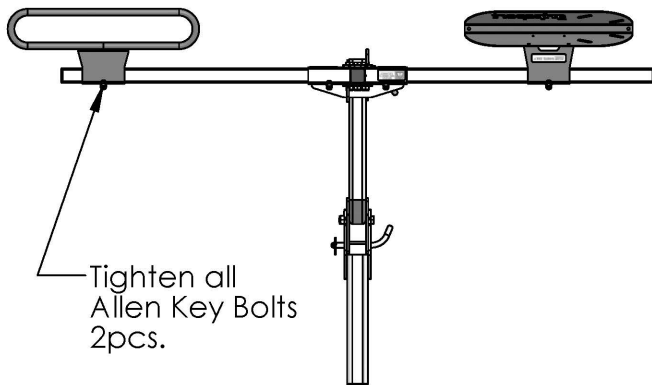
The configurations shown will suit the majority of bikes.

You may need to adjust spacing & arrangement to suit your specific bikes.

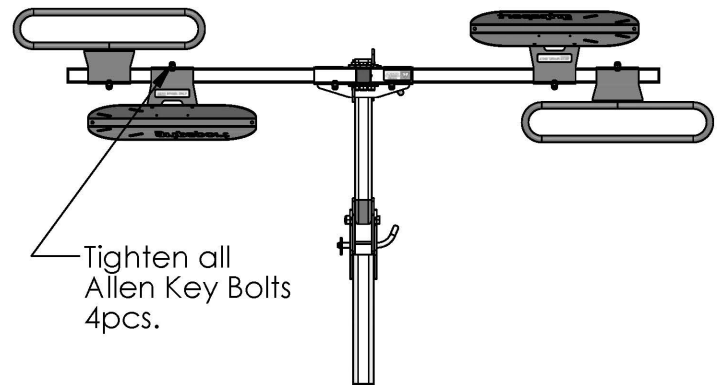
"Taco" Rear Wheel Channel **must only take rear wheel to avoid bikes sliding out during travel.**

1 & 2 Bike Titling Tow Bar Adapter shown below:

1 Bike

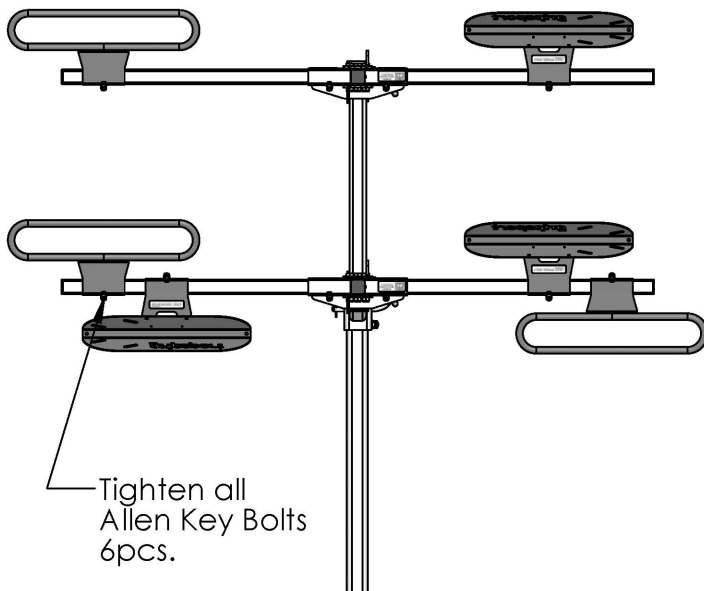


2 Bike

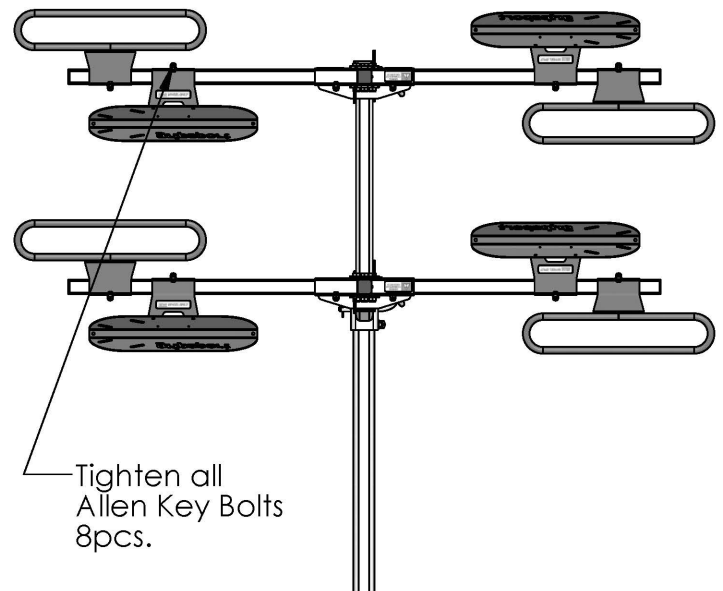


3 & 4 Bike Tow Bar Adapter shown below:

3 Bike



4 Bike



Note: "All-Hoop" set-up:

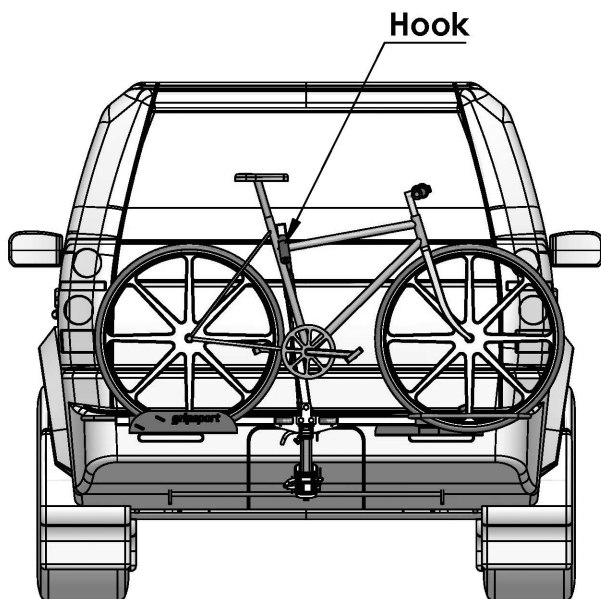
- Use diagrams as above, except use a Hoop in place of a Taco + Cinch Strap.
- The Hoop must be positioned along the Outrigger Arm according to each specific bike wheelbase length, to ensure both tyres sit down snug in both hoops.
- If a new bike is used with a different length, the Hoop will need to be repositioned again.
- Always ensure all Allen Key Bolts are tightened after repositioning.

6. Loading Bikes

gripsport

IMPORTANT:

If carrying only one bike the Hook **MUST** be placed at the **LOWEST** point on the top tube.



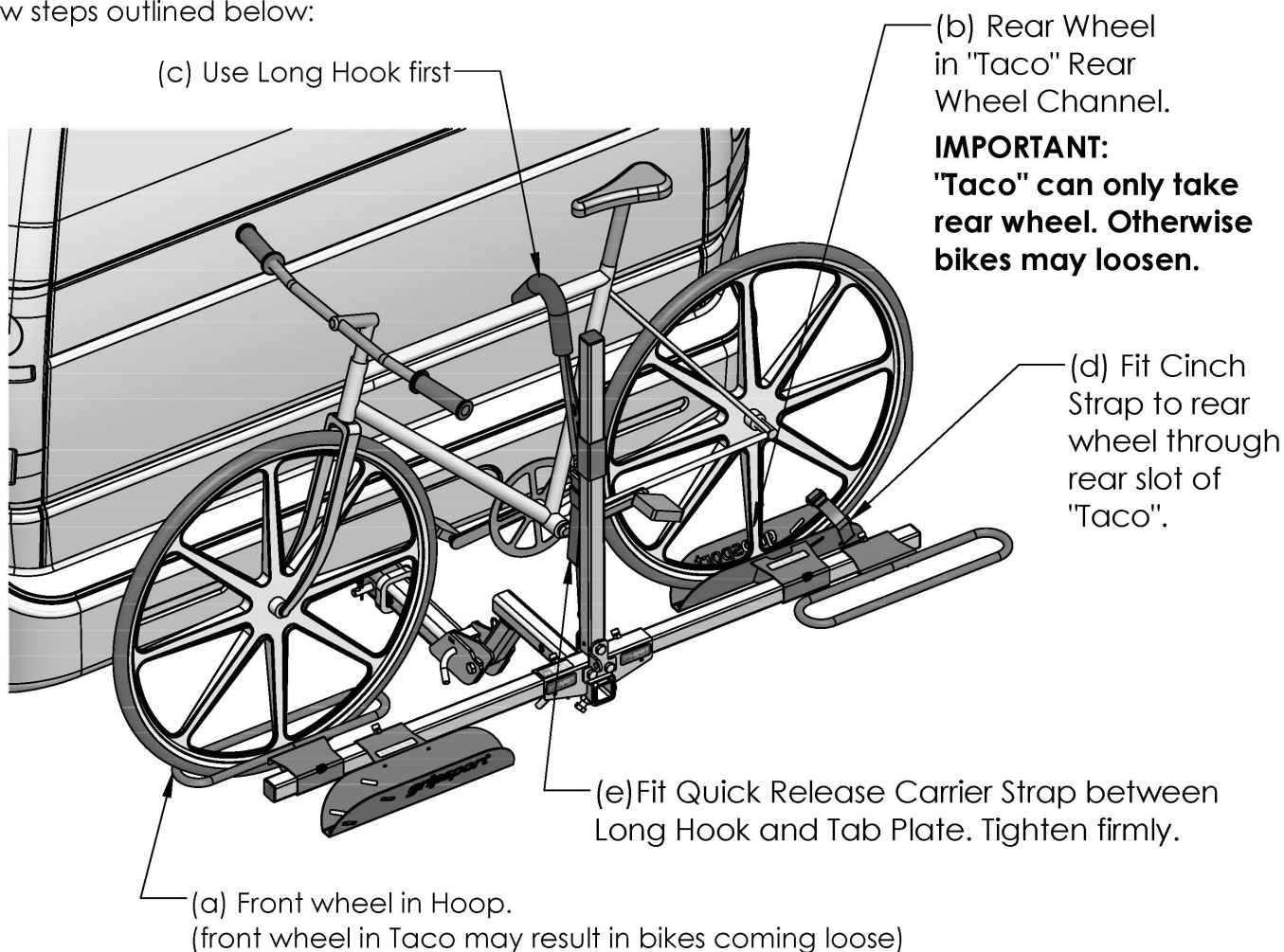
IMPORTANT:

Step-through frames **MUST** be fitted with a Top Tube Adapter (sold separately).



First bike

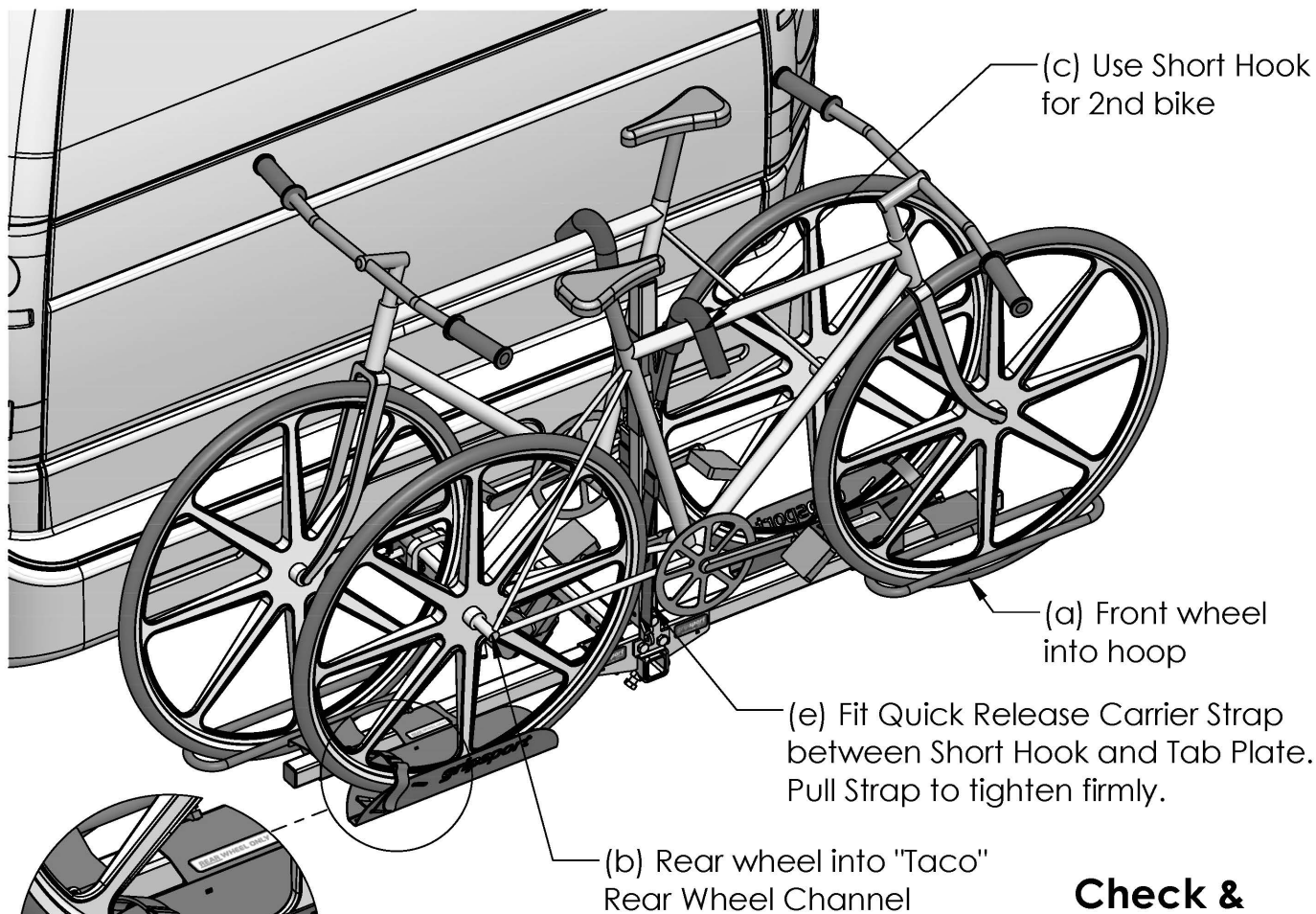
Follow steps outlined below:



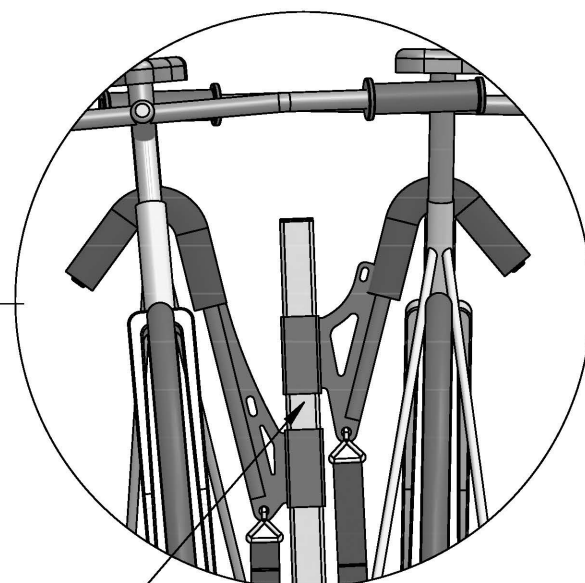
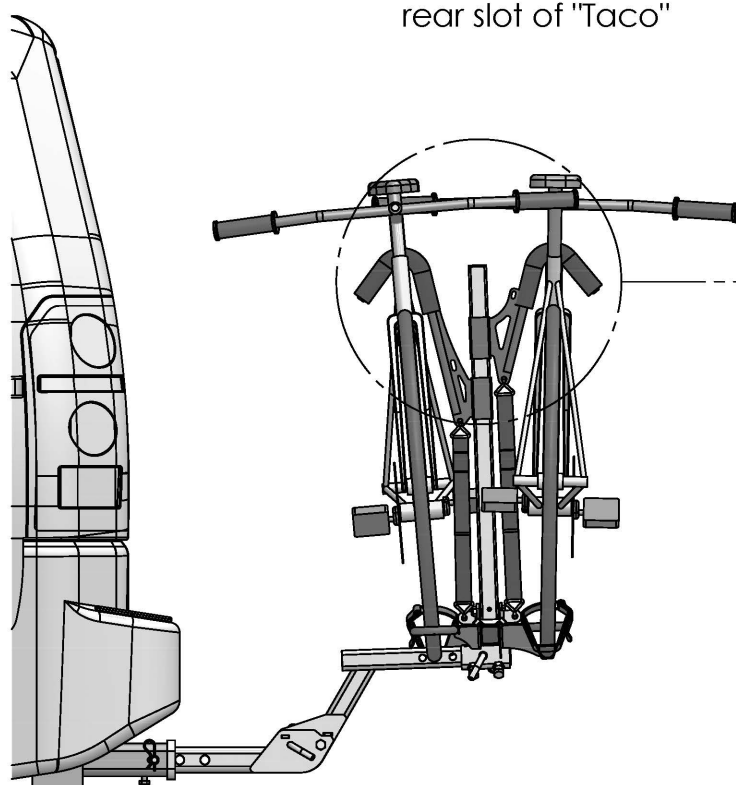
7. Loading second bike

gripsport

To add your second bike, follow these steps:



**Check &
Tighten all
straps firmly!**



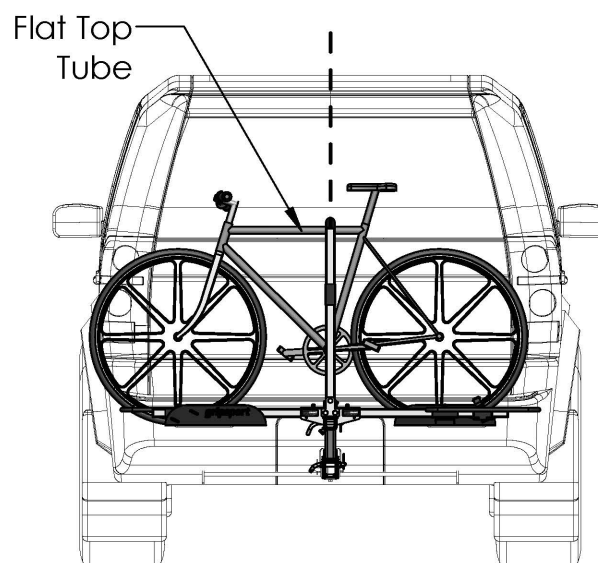
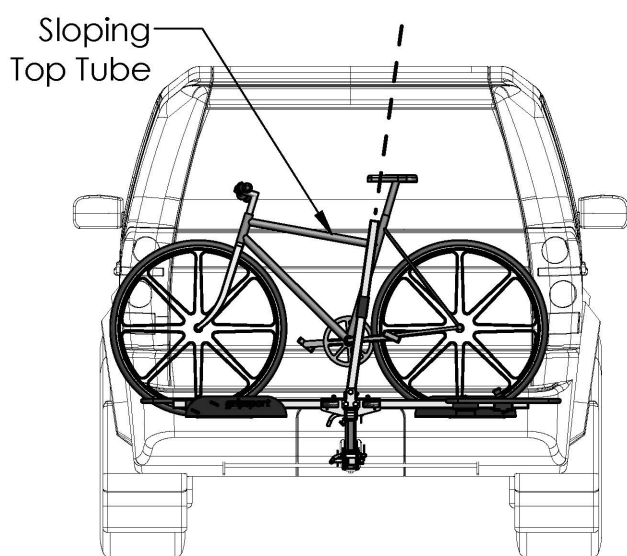
8. Hooks & Post positions for bike arrangements

gripsport

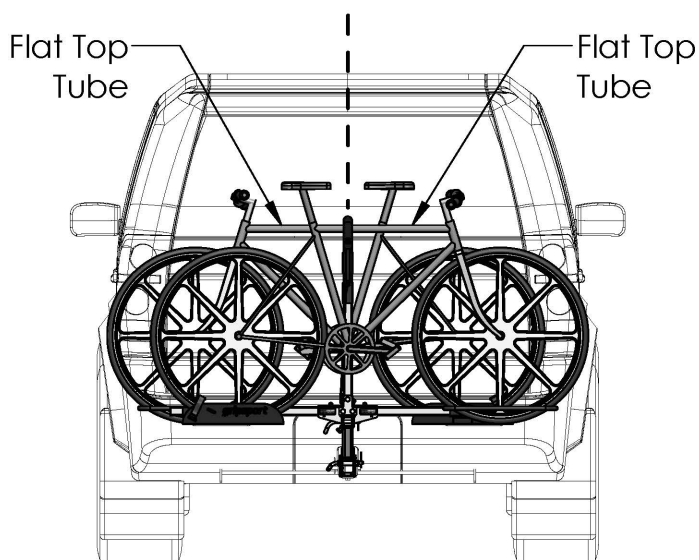
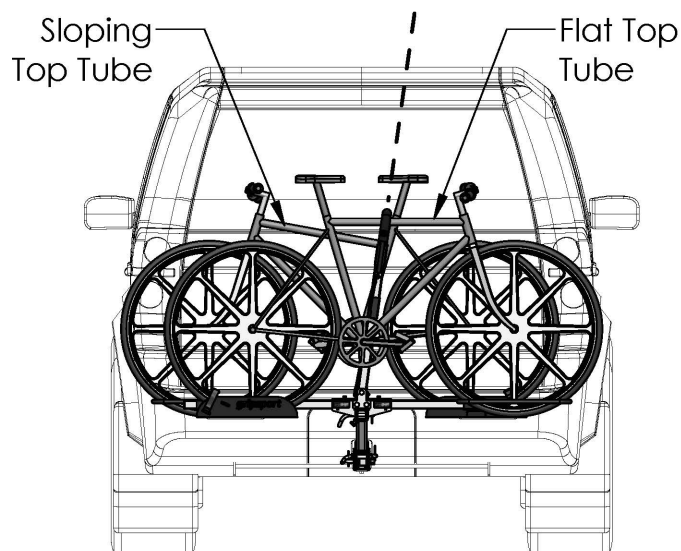
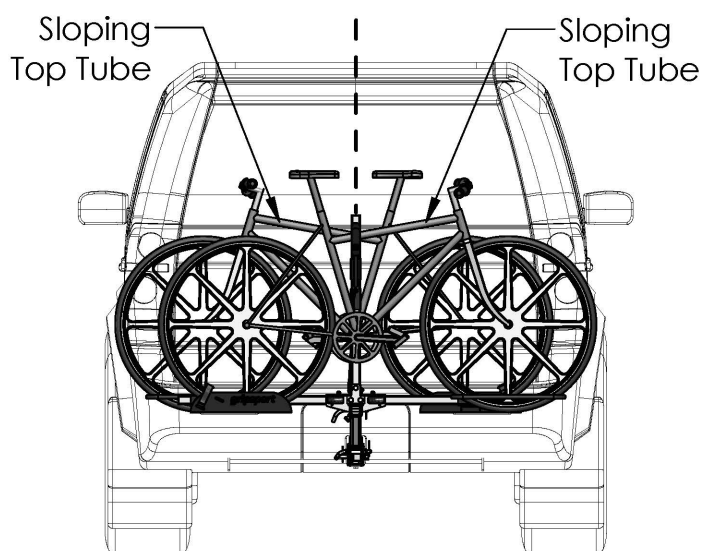
1 Bike only arrangements - Note position of Hooks Post:

Shown for bike in position closest to vehicle.

IMPORTANT: Rear wheel MUST ALWAYS sit in the "Taco" Rear Wheel Channel!



2 Bike combinations - Note position of Hooks Post:



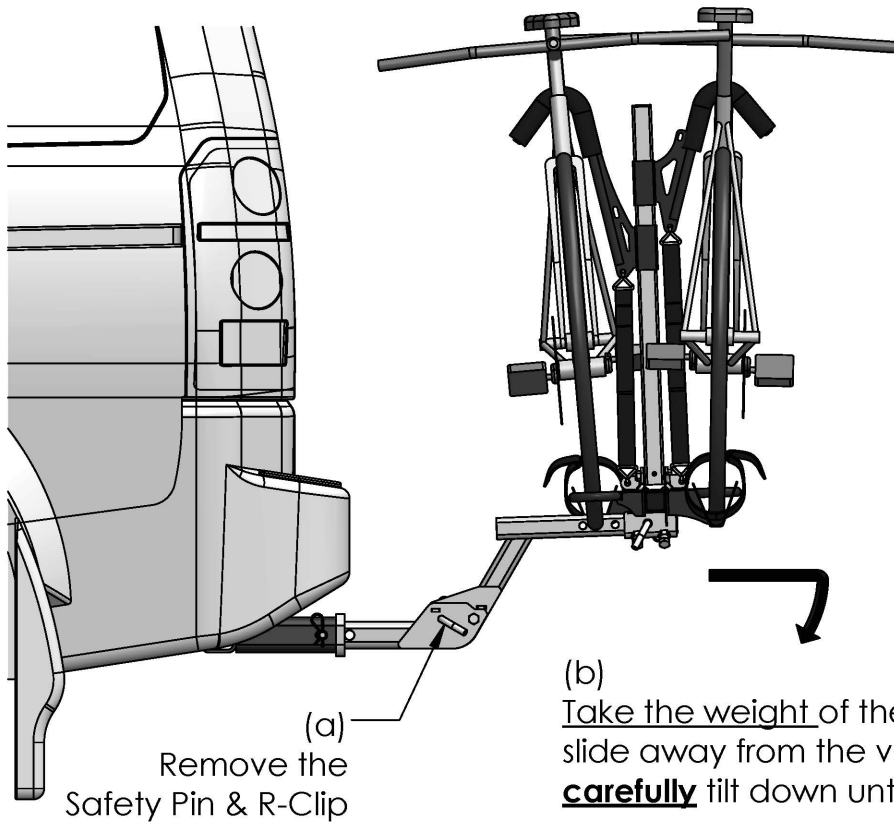
Notes:

1. Hooks Post can be tilted sideways as needed to ensure the correct fitting as shown.
2. Step through frames require a Top Tube Adapter, as shown on other page.
3. A gap must be maintained between hooks after fitting, as shown on other page.

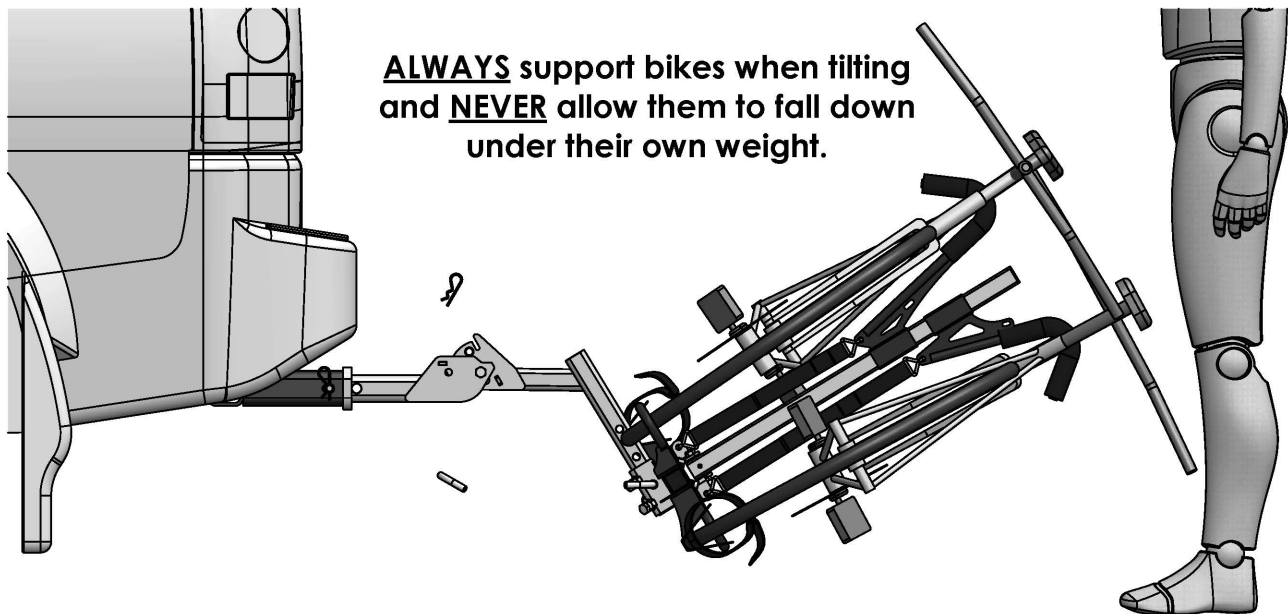
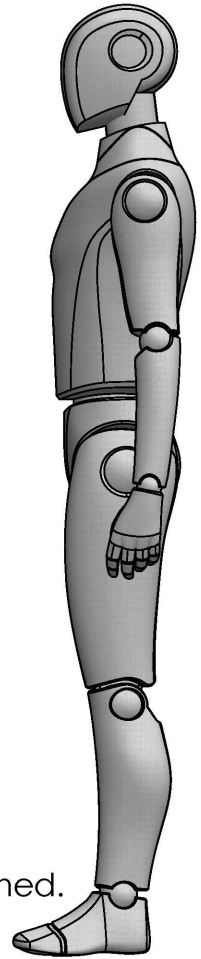
9. Tilting 1&2 Bike Tow Bar Adapter

gripsport

To gain access to the boot or tailgate of your vehicle, you can **gently** tilt the carrier down with the bikes loaded.



(b) Take the weight of the bikes, slide away from the vehicle, **carefully** tilt down until stop is reached.



(c) Reverse these steps to tilt back into position.

(d) **ALWAYS** replace the Safety Pin and R-Clip before driving vehicle with rack fitted.

10. Tongue Mount TBA - Tilting 1&2 Bike version

gripsport

The Tongue Mount Tow Bar Adapter (TBA) tilting function works in the same way as the Square Hitch model shown previously.

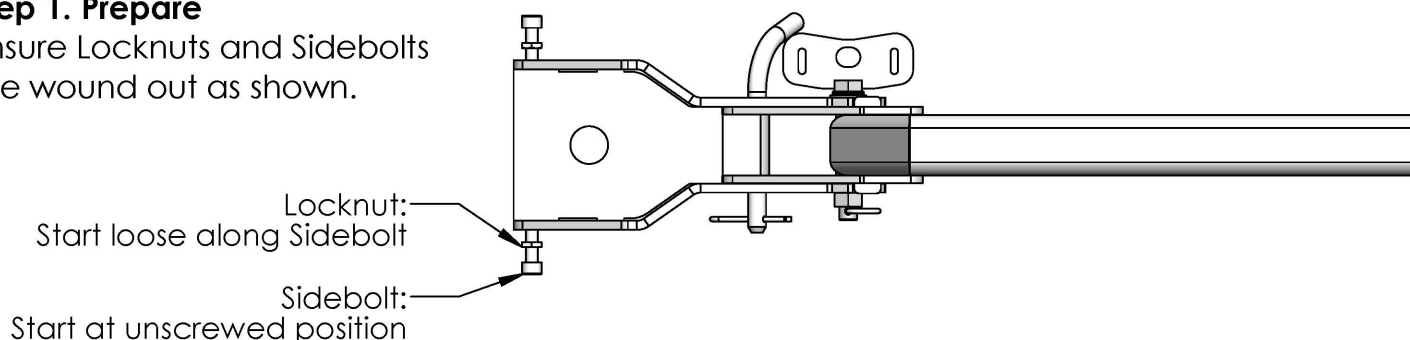
NOTE:

- Tongue mounted carriers are rated for light off-road use ONLY.
- A Towbar Tongue used in a Square Hitch Receiver is likewise light off-road rated.
- For heavy off-road use, please use the Square Hitch version shown on page 2.
- You may need to upgrade your vehicle tow bar from a Tongue to a Square Hitch Receiver.

Fitting the Tongue Mounted TBA to your vehicle tongue can be done as shown below.

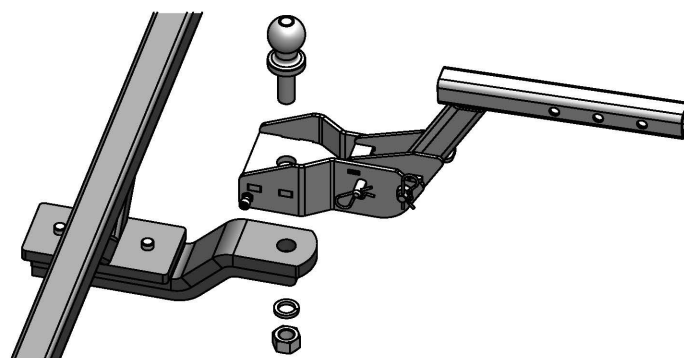
Step 1. Prepare

Ensure Locknuts and Sidebolts are wound out as shown.



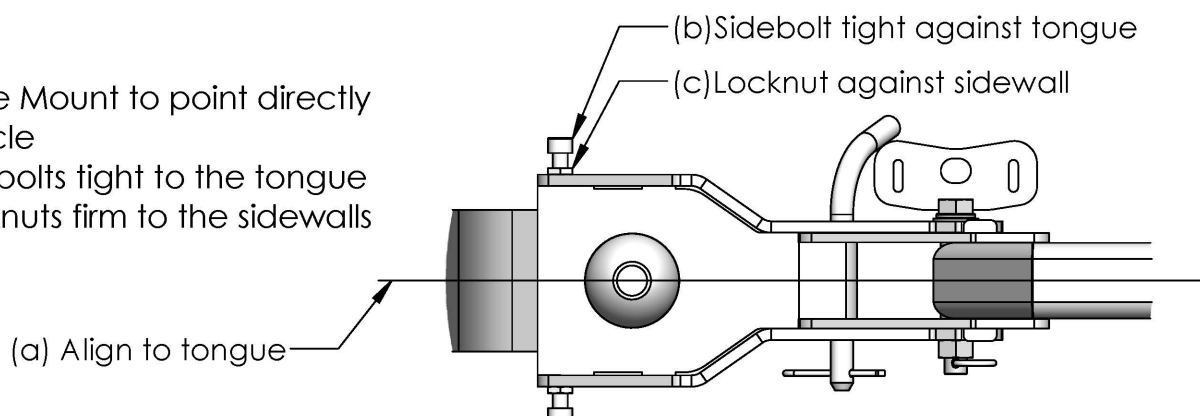
Step 2. Assemble

Assemble Tongue Mount, Tow Ball, Spring Washer and Nut onto vehicle Tongue. Tighten Nut to just firm at this stage.



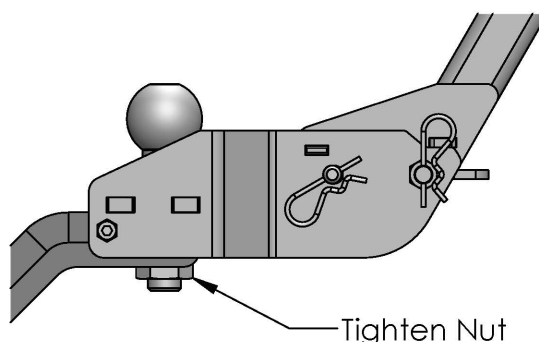
Step 3. Position

- (a) Align Tongue Mount to point directly back from vehicle
- (b) Tighten Sidebolts tight to the tongue
- (c) Tighten Locknuts firm to the sidewalls



Step 4. Final Fix & Tighten

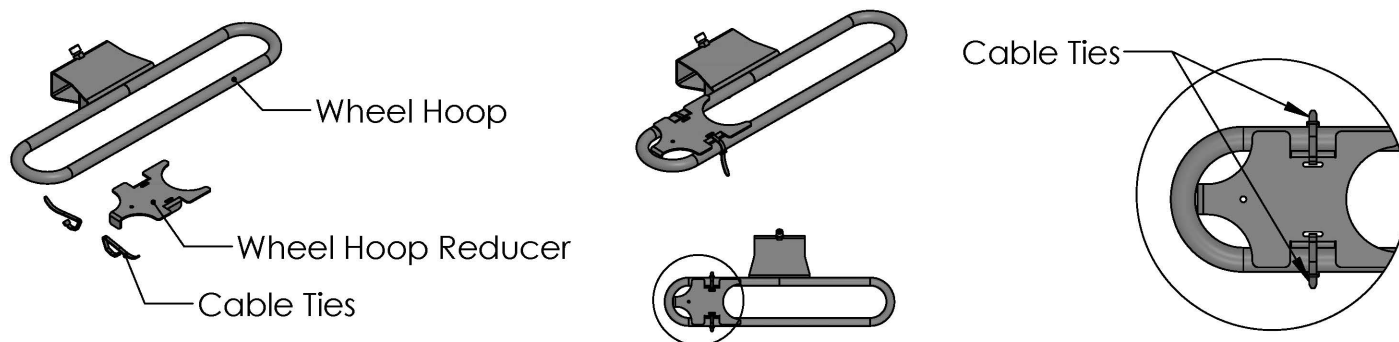
Tighten Tow Ball Nut very tight as per supplier/product recommendations. Double check all fixings and position.



11. Optional: Fit Wheel Hoop Reducers

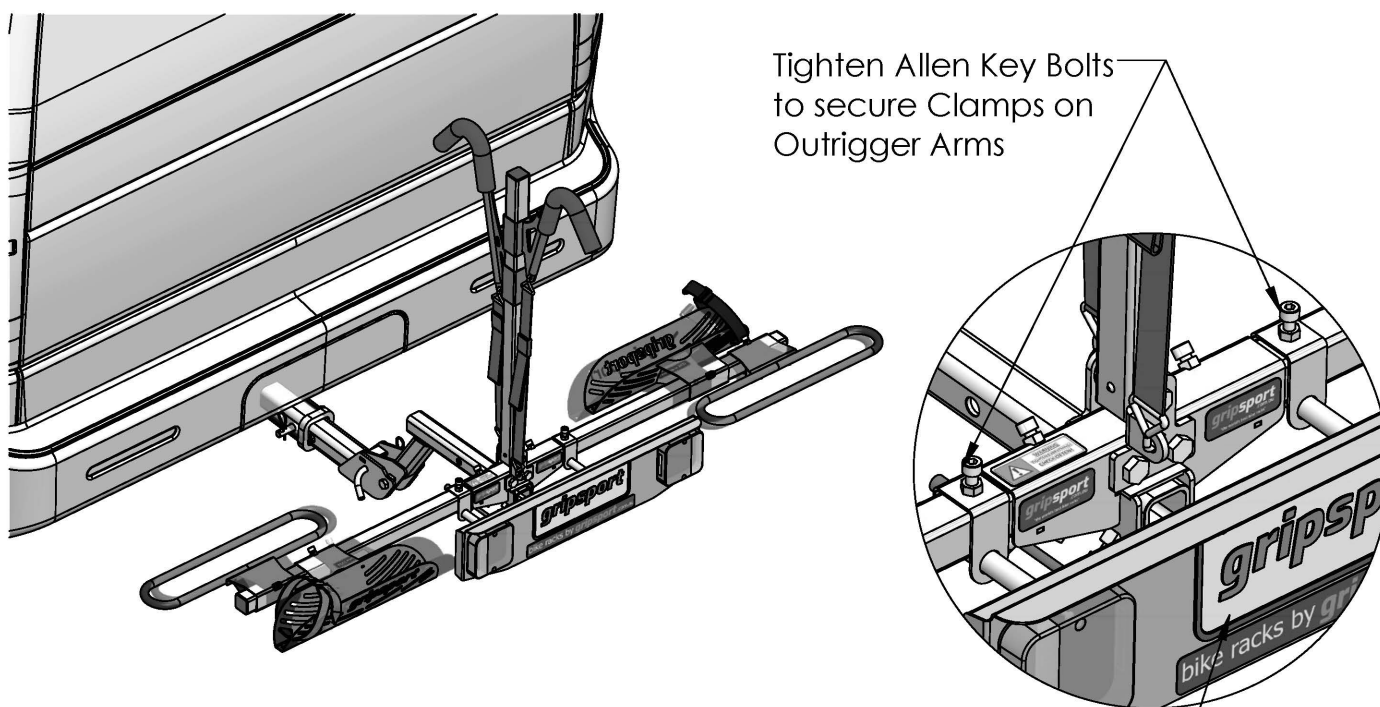
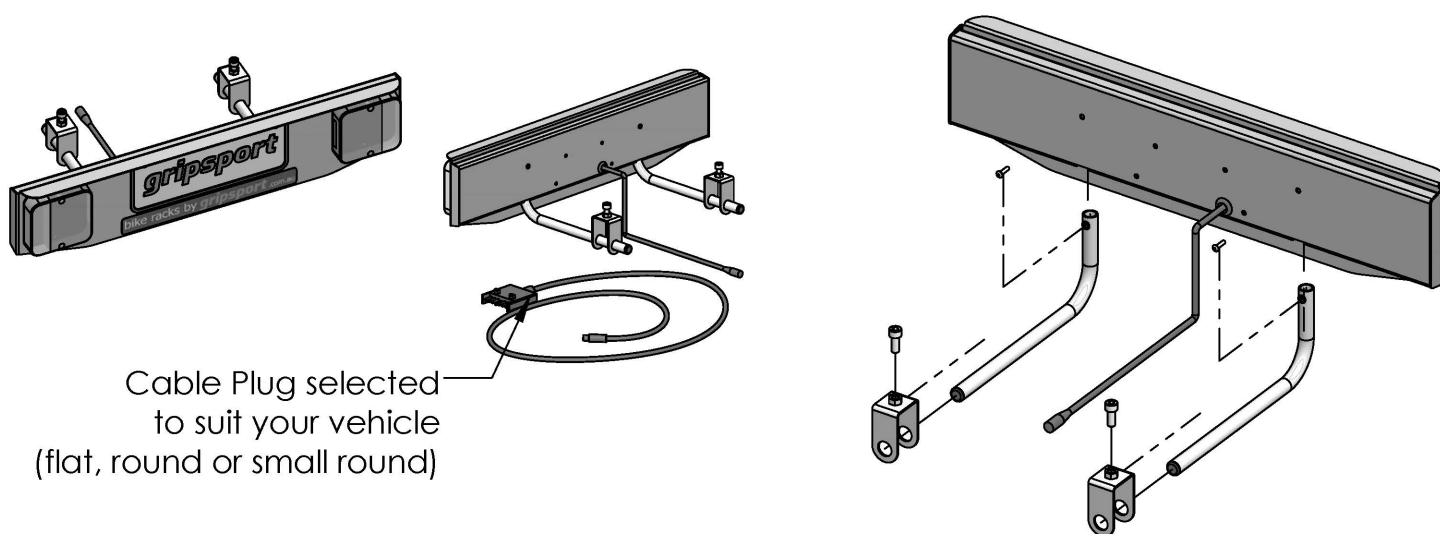
gripsport

If using Wheel Hoop Reducers, position as shown below:



12. Optional: Fit Rack Light

GS-Adventure+ uses GripSport Rack Light. Fit as shown below:



Attach your own number plate using included screws